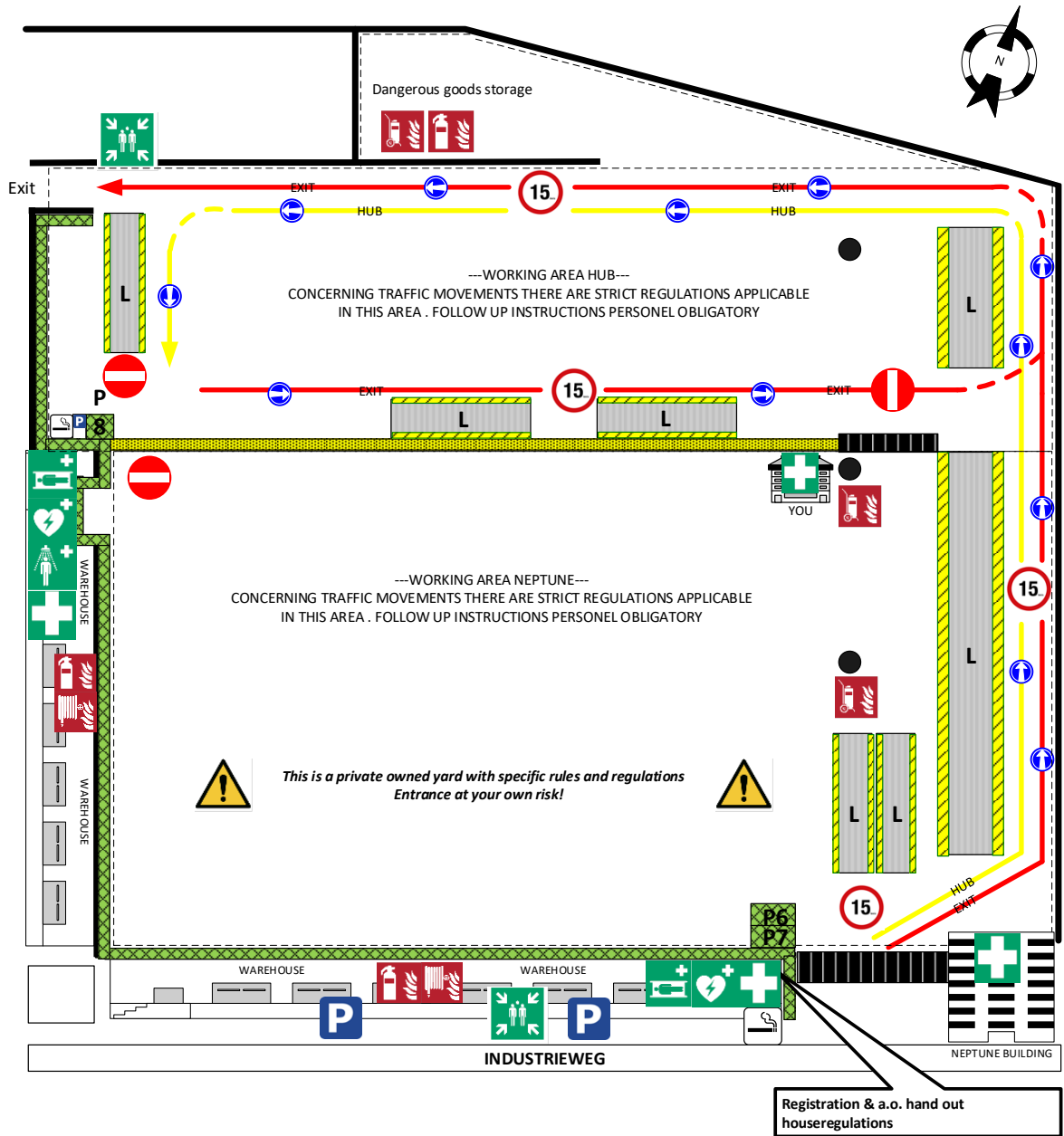


HOUSE REGULATIONS - ENGLISH

GB



- Way in" to HUB for all traffic
- Way "out" for all traffic
- Walkway : helmet and highvis obligated
- Working area truckdrivers, PPE obligated
- Area : no PPE obligation
- Pedestrian crossing
- Entrance prohibited except for forklift trucks
- L zone
General load / unload zones trucks
- P zone
Assigned parking area authorized vehicles
- 15
Traffic sign ; maximum speed 15 km
- Lampposts

On the yard the following regulations are applicable:



OBLIGATIONS / PROHIBITIONS

Visitors yard report to NEPTUNE and must adhere to all regulations

PPE (helmet and HV-vest) can be borrowed

Full covered work clothes in working area (outside walkways)

Instructions Peterson staff strictly need to be followed

Vehicles must use appointed parking area

Couriers/deliveries to park on appointed parking area. P6 and 7 report to Neptune , P8 at Peterson!
These parking areas are exempted from PPE use

Pedestrians have priority over all traffic ; forklifts have priority over other vehicles

Drivers first report to transport department coordination (YOU)

Compliance with Golden Rules if obtained is mandatory

Reversing trucks must use a guide!

Keep emergency exits and fire extinguishers clear

Open fire and high risk activities are prohibited without a valid working permit

The use of , or being under influence of alcohol or drugs is not allowed on this location

Use of mobile phone only allowed in a safe area and work is Interrupted

Smoking is only allowed in designated areas

Digital camera recording only with management approval.

ICONS

On this location the following regulations are applicable:



Yard Office Unit transport

HOUSE REGULATIONS YARD



HUB, Industrieweg 31 – 35, 1785 AG Den Helder

Incidents and unsafe situations

Report incidents or unsafe situations to a Peterson employee.

In case of emergency call 0223- 639600

WHO are you / WHAT happened / and WHERE ?

- Do not endanger yourself or others and keep other people on a safe distance.
- Try to put out a starting fire.
- Minimize damage and personal injuries.
- In case of injury inform first aid (BHV) officer recognizable on helmet & green vest.
- Give details and mention people involved.

Evacuation alarm

- Leave the yard via the main entrance or emergency exit according instructions.
- Go to muster point and follow up instructions of first aid team.

